

ADD-ON

MEDUSA

Windchill Workgroup Manager

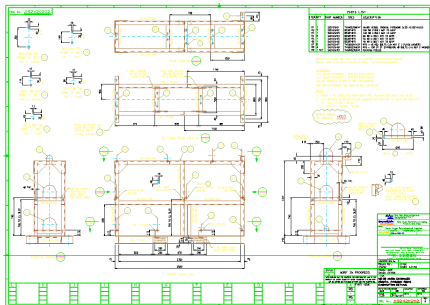
Windchill® PDMLink™ Interface

www.cad-schroer.com

The Windchill Workgroup Manager for MEDUSA4

Connecting MEDUSA4 with Windchill® PDMLink™

The Windchill Workgroup Manager for MEDUSA4, developed in partnership with PTC, provides tight integration between MEDUSA4 and the latest version of Windchill PDMLink. By managing all your engineering data in a single, controlled environment across your entire organisation, you can optimise your product development process, increasing quality while decreasing design times.

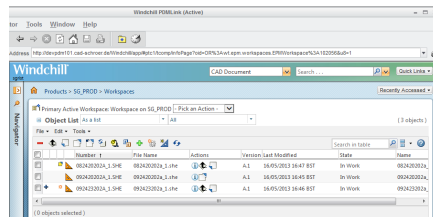


Access to Windchill PDMLink functionality from a dedicated tooltray in MEDUSA4

Overview

The Windchill Workgroup Manager for MEDUSA4 is based on the same interface technology and provides the same look and feel as other PTC Windchill Workgroup products. It allows you to search for MEDUSA4 sheets, request drawings for editing, and return edited sheets via check-in or update into the central storage area.

You can integrate chosen Windchill PDMLink attributes with your MEDUSA4 sheet headers, and edit master parts information when storing sheets, with bi-directional auto update. Associations between parts and sheets can be edited and updated individually.



The familiar user interface is integrated and available for MEDUSA4 users

Global Collaboration

Because Windchill PDMLink is a Web-based system, this integration allows you to manage your MEDUSA4 designs remotely via standard Internet technology, ideal for today's global businesses and extended supply chains. Designers working concurrently can gain access to all project-related information managed in Windchill.

Consistently High Data Quality

The integration allows you to achieve a consistent standard of information for drawings and documents from multiple systems across the whole company, due to centralised storage of all MEDUSA4 sheets, released or in process, in Windchill PDMLink. Users can track and control the drawing modification process through revision options and "freezing" of released sheets. Companies gain centralized control over project-specific test and release processes with access to accurate and current information at any time, as well as to version histories for complete traceability. The system allows organisations to standardise design processes across projects and applications.

Decreased Design Times

The Windchill Workgroup Manager for MEDUSA4 improves productivity by making it easy to retrieve and re-use design data directly from within MEDUSA4 without cumbersome data management processes, as these are handled in the background by Windchill PDMLink.

Technical Highlights

- Dedicated tooltray of Windchill PDMLink functions in MEDUSA4
- Open files directly in MEDUSA4 while searching in Windchill
- MEDUSA4 title block attributes interact automatically with Windchill PDMLink
- Allow attributes to be edited in either application
- Automatically generate/modify part structures
- Links between drawings and parts information
- Event controlled conversion of MEDUSA4 sheets into other formats (e.g. conversion to tiff after release of the drawing. *Note: the converters into the target format are not a component of the product*)
- Event controlled publishing of MEDUSA4 sheets with CAD-Worker
- Custom event-driven drawing modification (e.g. modification of different texts on drawings)
- Use and control MEDUSA4 BOM as part of company-wide BOM structure

Software Prerequisites

- MEDUSA4 DRAFTING PLUS or ADVANCED package from v 5.2
- Windchill PDMLink 10.1



United Kingdom
CAD Schroer UK Ltd
Godwin House, Castle Park
Cambridge CB3 0RA
Tel. +44 1223 460 408
www.cad-schroer.com

United States
CAD Schroer US, Inc.
34 Rand Place
Pittsford, NY 14534
Tel. +44 1223 460 408
www.cad-schroer.com